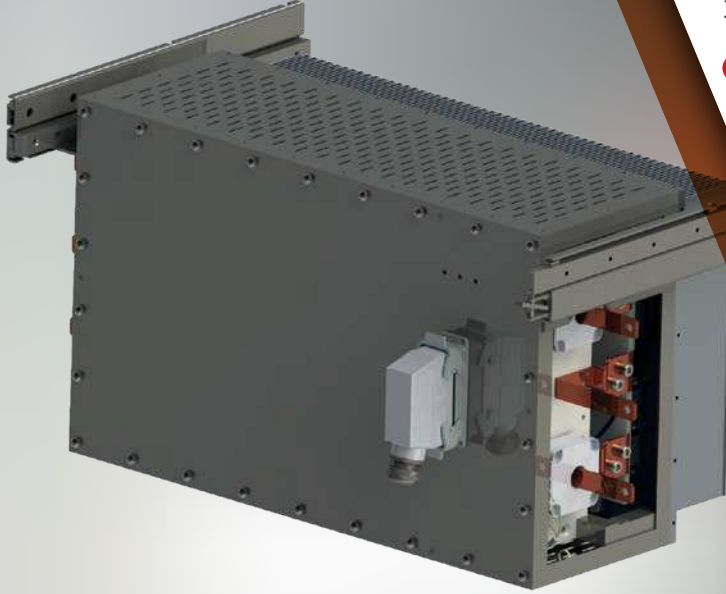


TÜBİTAK
Rolling Stock Traction System
Power Platform/Light Rail Vehicle
TRACS-GP/HRT

FEATURES

- ✓ **Power**
200 kW
- ✓ **Input Voltage**
1500V DC
- ✓ **Output Voltage**
3 x 0-1000 V, 0-175 Hz
- ✓ **Nominal Output Current**
3 x 130 A
- ✓ **Dimensions (U X G x Y)**
450 x 750 x 450 mm
- ✓ **Cooling**
Forced Air Cooling
- ✓ **Weight**
90 kg





TÜBİTAK
Rolling Stock Traction System
Power Platform/Light Rail Vehicle
TRACS-GP/HRT

- ✓ **TÜBİTAK Rolling Stock Traction System – Power Platform / Light Rail Vehicle (TRACS-GP/HRT)**, are designed for light rail vehicles such as trams and subways used in intra-city passenger transport.
- ✓ **TRACS-GP/HRT**, consists of high efficiency motor drive and braking power electronic circuits operating under catenary lines.
- ✓ **TRACS-GP/HRT** and **TRACS-KP**, combines efficiency and performance with a vector-controlled motor drive system. The control system can respond dynamically to motor torque requests. Thus, the effect of slip-slide condition on the driving comfort can be eliminated.
- ✓ **TRACS-GP/HRT** has the principle of "maximum power in minimum space" which keeps compactness, reliability and long life criteria at the highest level. Through the same power platform, parallel operation is provided up to three traction motors.
- ✓ In order to ensure safe operation in all operating conditions, DC busbar structure of **TRACS-GP/HRT** is designed by the finite element method and power electronic circuits cooled by a high efficiency fan unit.

TÜBİTAK Rail Transport Technologies Institute, Gebze/KOCAELİ

+90 262 677 2400 +90 262 641 9106

rute@tubitak.gov.tr

rute.tubitak.gov.tr